

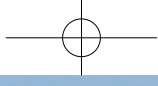


Our city, our street, our bus



200 years ago the emperor Jiaqing traveled to Tainan which, during that time, was the major city in Taiwan. Therefore, all the local residents are encouraged to travel in Tainan by newly designed Metro Bus system, enjoy themselves and indulge like the Jiaqing Emperor did. The City Metro Buses are especially good for those who have retired from work as everyone over 65 years of age can ride the bus for free. A good bus transportation system is very important; in particular, its route layout must cover all 37 administrative districts of the whole Tainan city. I'm very glad that our buses have achieved that.

Bus system should be closely connected with people's daily



life, shopping, friends' visiting, working, seeing the doctor, traveling, and schooling. The last objective was to make the bus services run more efficiently and become friendlier to the public. We are proud to announce that 17 transferring stations will soon become fully operational, making sure that the travelers feel comfortable and making the buses more accessible.

I think that Tainan is just like a great lady with natural beauty, her beauty and rich cultural heritage will also be appreciated on a larger scale; there are 22 national monuments, 4 national intangible cultural assets, 3 National Scenic Areas close to mountains and the sea. Tainan is also the largest agricultural land in the country; it is rich in food culture and agricultural products, has encompassed the largest number of temples in Taiwan.

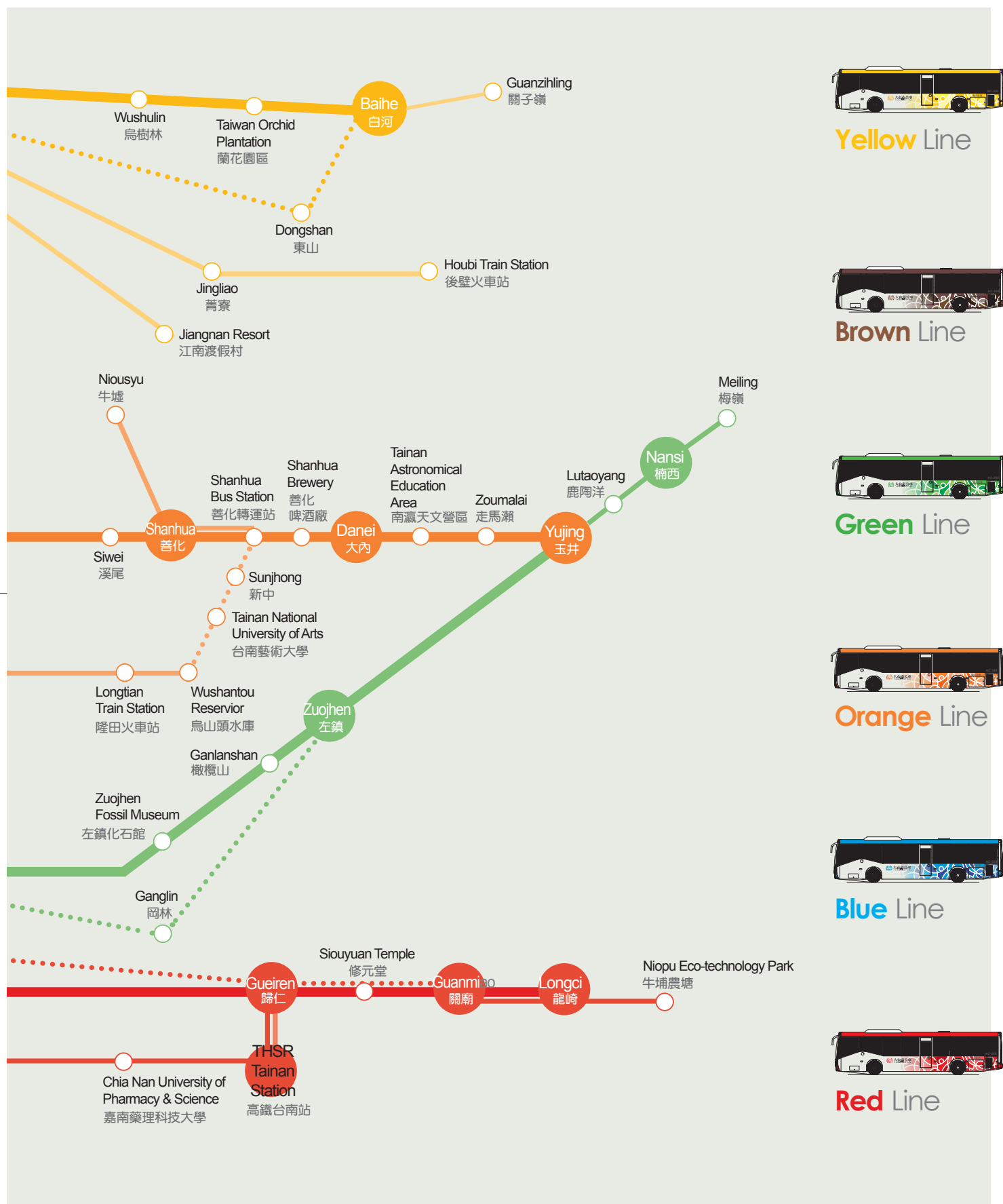
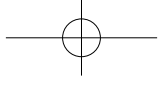
The beauty and richness of cultural heritage of the Tainan area, after becoming linked with an efficient local public transportation system will definitely give us a great and unique sense of pride and honor.

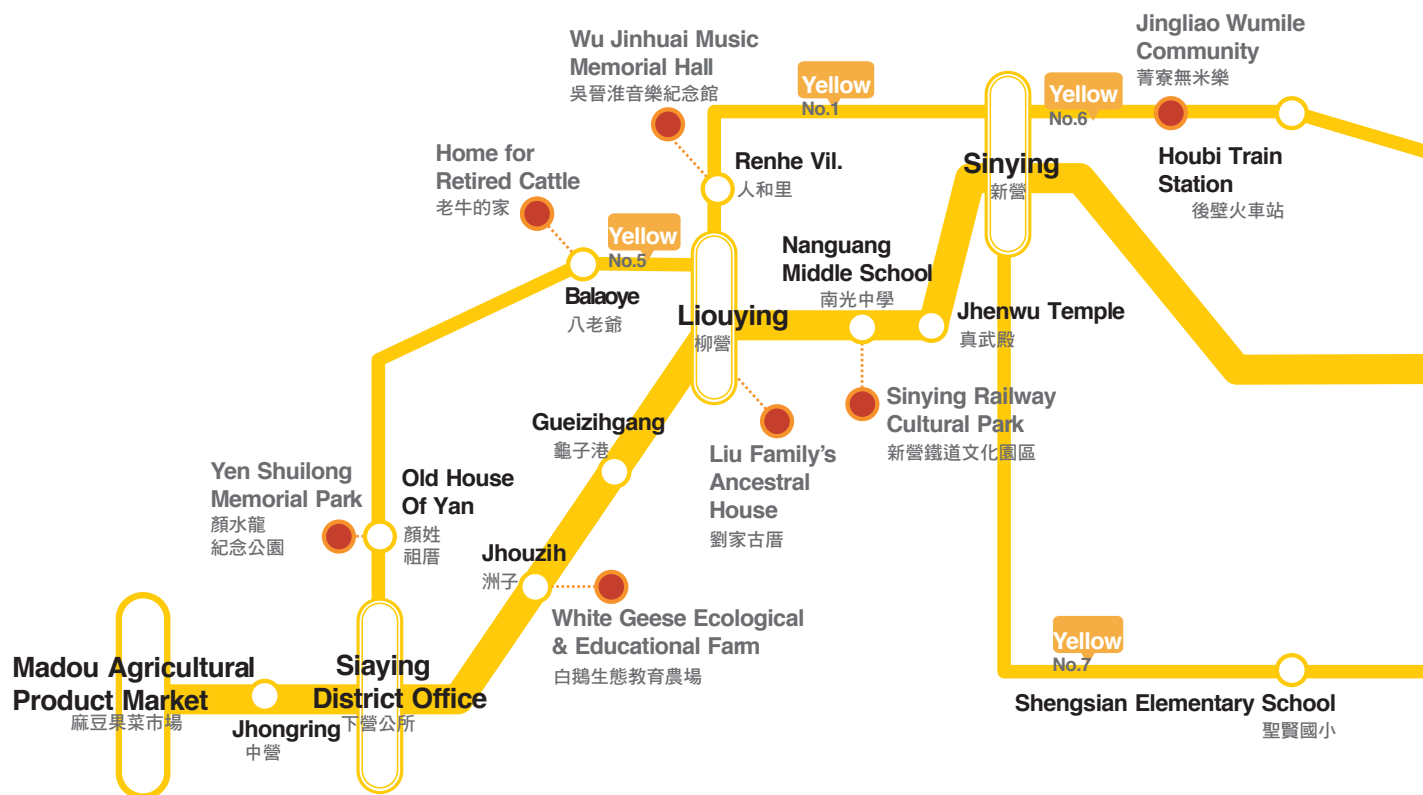
Ching-Te Lai
Mayor of Tainan City Ching-Te Lai

攝影：陳應欽

The map to the Tainan City Bus







Home for Retired Cattle
老牛的家

Take the Yellow 3, get off at the stop "Guoyihou Temple" (果毅後廟前站), walk 30 minutes.



TOGO Rural Village Art Museum
土溝農村美術館

Take the Yellow 10, get off at the stop "Tugou Vil." (土溝里站).



Yen Shuilong Memorial Park
顏水龍紀念公園

Take the Yellow 5, get off at the stop "Old House Of Yan" (顏姓祖厝站).



Pingpu Cultural Area
六重溪平埔文化園區

Take the Yellow 10, get off at the stop "Liouchong River" (六重溪站), and walk about 5 minutes.



Baihe Lotus Park
白河蓮花公園

Take the Main Yellow Line, get off at the stop "Baihe" (白河站), No. 381, Shanmin Rd., Baihe Dist., Tainan City 732, Taiwan



White Geese Ecological & Educational Farm
白鵝生態教育農場

Take the Main Yellow Line, get off at stop Jhouzih(洲子站). No. 45, Zhouzi, Hejian Village, Xiaying Dist., Tainan City 735, Taiwan



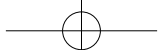
Liu Family's Ancestral House
劉家古厝

Take the Main Yellow Line, get off at Liouying(柳營站).No.128, Sec. 3, Zhongshan W. Rd., Liuying Dist., Tainan City 736, Taiwan,



The Dongshan Duck Heads
東山鴨頭

Take the Yellow 7 or 11; get off at the stop "Dongshan" (東山站).



Starts at Madou (麻豆), then through Siaying (下營), Lioujia (六甲), Liouying (柳營), Sinying (新營) to Baihe (白河).



Suggested Itinerary

8:55 - take the Main Yellow Line at "Sinying Train Station" (新營火車站).

9:42 - get off at the stop "Theater" (戲院前站), stay and take a walk for about two hours. Visit the Dienji Cinema (電姬戲院), then Madou Old Street (麻豆老街), and finally snacks at Madou Market (麻豆市場美食).

11:38 - take the Main Yellow Line at the stop "Theater" (戲院前站).

12:40 - get off at the stop "Wushulin" (烏樹林站), visit "Taitang Wushulin Cultural Park" (台糖烏樹林文化園區)>Ride the "Mini Train" (五分車)>Visit the "Theme Hall" (主題館), suggested time for sightseeing: 2.5 hrs.

15:10 - walk to "Taiwan Orchid Plantation Park" (台灣蘭花生物科技園區) stay for about 2 hours.

17:09 - return trip to Sinying Train Station (新營火車站) or to your planned destination.



Guanzhiling Hot Spring 關子嶺溫泉區

Take the Yellow 12 or 13; get off at the stop "Guanzhiling" (關子嶺站).



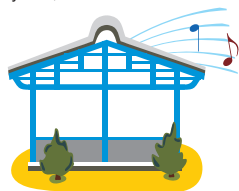
Sinying Cultural Park 新營鐵道文化園區

Take the Main Yellow Line, get off at the stop "Nanguang Middle Senior High School" (南光中學站), No. 42, Zhongxing Rd., Xinying Dist., Tainan City 730, Taiwan



Jingliao Wumile Community 菁寮無米樂社區

Take the Yellow 6; get off at stop "Jingliao" (菁寮站).



Wu Jinhui Music Memorial Hall 吳晉淮音樂紀念館

Take the Yellow 1, get off at the stop "Renhe VII" (人和里站), No. 158, Renheli Jiehe Street, Xiaying Dist., Tainan City 735, Taiwan



Don't miss out



Traditional Snacks at Lioujia

How to get there

Take the Yellow 1 or 2; get off at the stop "Ice Factory" (冰廠站), you will see the "Koufu Mutton Shop", the next stop is "Lioujia Market" (六甲市場站), walk from there for about 10 min till "Mazu Temple".

Spotlight

Bean Sprouts Noodles 大麵福仔豆菜麵

六甲市場內A-10攤，
台南市六甲區中正路522號

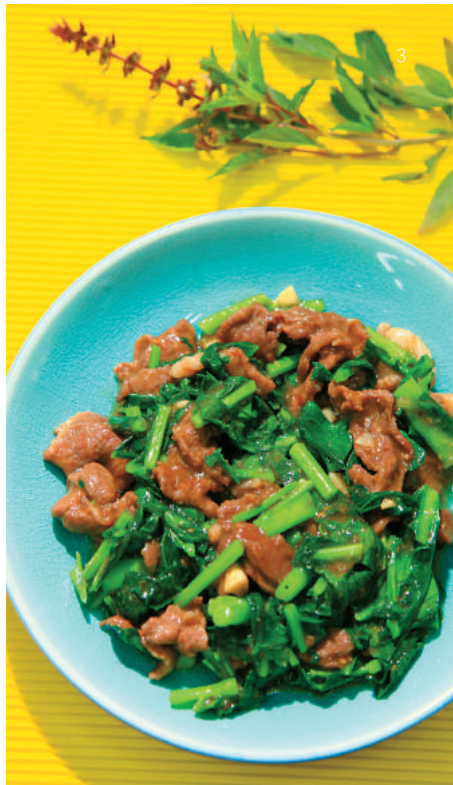
Booth A-10, Liujia Market, No. 522,
Zhongzheng Road, Liujia Dist., Tainan
City 734, Taiwan
+886+6-6980680



Koufu Mutton Shop 口福羊肉店

台南市六甲區中山路120號

No. 120, Zhongshan Road, Liujia Dist.,
Tainan City 734, Taiwan
+886+6-6983223



The ice dessert of seasoned millet mush in front of the Mazu Temple 媽祖廟前麵茶冰

台南市六甲區仁愛街38號前廣場

No. 39, Ren Ai Street (in front of the
square), Liujia Dist., Tainan City 734,
Taiwan





Old Krafts at Jingliao

How to get there

Take the Yellow 6, get off at the stop Jingliao (菁寮站), the entrance of Old Street

Spotlight

Liangmei Barbershop 兩美理髮店

台南市後壁區菁寮里50號
No. 50, Jingliao Village, Houbi Dist.,
Tainan City 731, Taiwan
+886-6-6621818

Jiancheng Lead Bucket Shop 建成鉛桶店

台南市後壁區墨林里323-4號
No. 323-4, Moulin Village, Houbi Dist.,
Tainan City 731, Taiwan
+886-6-6622383

Watch Shop 瑞榮鐘錶店

台南市後壁區墨林里207號
No. 207, Moulin Village, Houbi Dist.,
Tainan City 731, Taiwan
+886-6-6621195



Lotus Root Powder from Baihe



How to get there

Every year from October till December, take the Yellow 15 from the stop "Baihe", you will see lotus-roots being pulled out from lotus fields along the road, and the powder dried under the sun glitters like snowflakes.

Website: Lotus Root Powder "TSENG": www.shop2000.com.tw/linohfon



People from Jingliao

How to get there

Take the Yellow 6; get off at the stop "Jingliao Elementary School" (菁寮國小站).

Spotlight

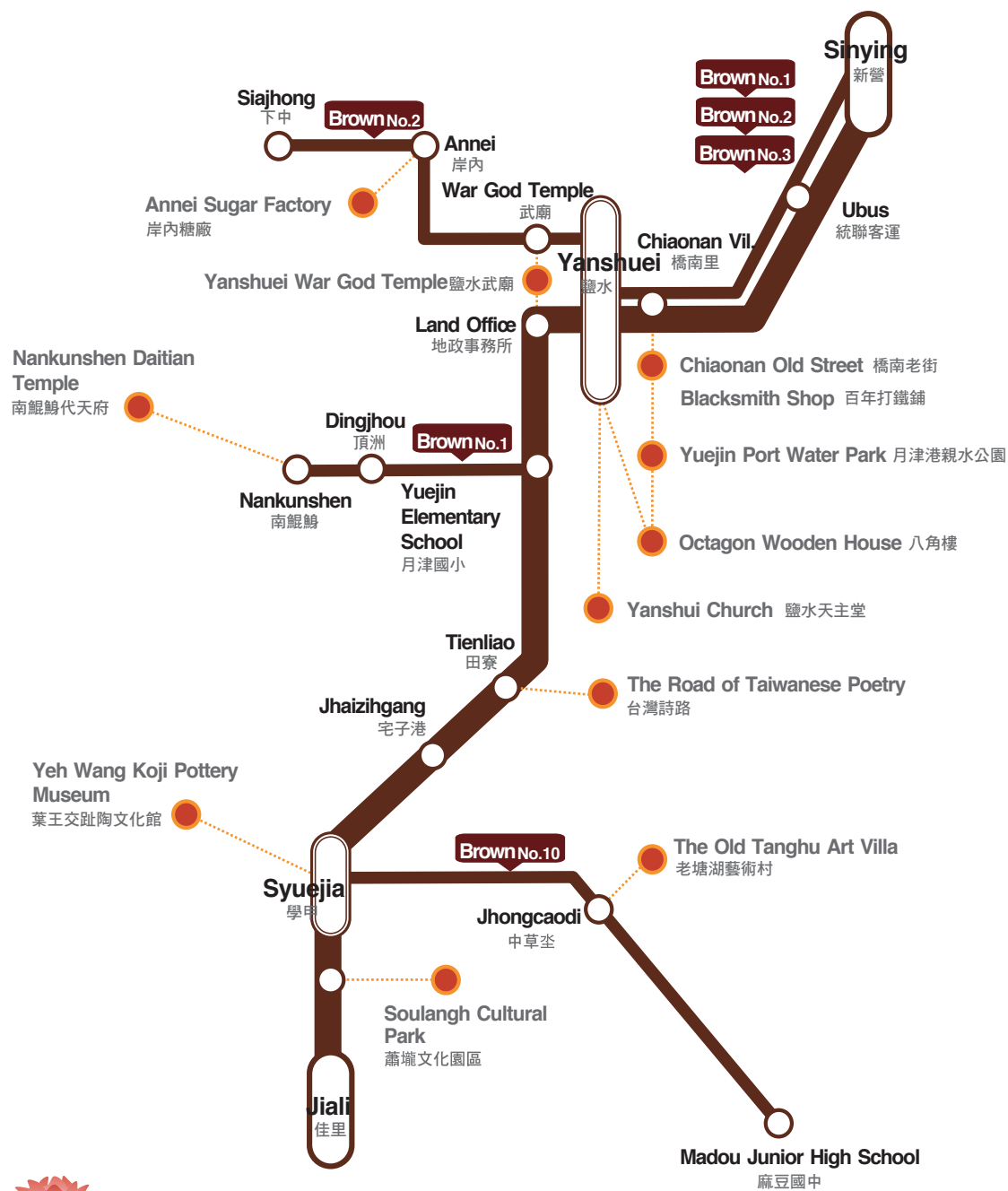
Jingliao Holy Cross Catholic Church 菁寮聖十字架天主堂

台南市後壁區菁寮墨林里294-1號
+886-6-6622975 (advanced booking required)
No. 294-1, Moulin Li, Jingliao, Houbi Dist., Tainan City 731, Taiwan



BrownLine

1 Main Line + 5 Routes



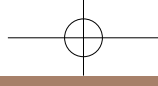
Yuejin Port Water Park
月津港親水公園
Take the Main Brown Line, get off at the stop "Yanshuei" (鹽水站), walk 5 minutes along the Kangle road (康樂路).



The Road of Taiwanese Poetry
台灣詩路
Take the Main Brown Line, get off at the stop "Tienliao" (田寮站)
No. 68-1, Tienliao Li, Yenshui Dist. Tainan City 737, Taiwan



Nankunshen Daitian Temple
南鯤鯓代天府
Take the Brown 1, get off at the stop "Nankunshen Temple" (南鯤鯓站)
No. 976, Kunjian, Beimen Dist., Tainan City 727, Taiwan



War God Temple
鹽水武廟

Take the Brown 2, get off at the stop
"War God Temple"
No. 87, Wumiao Rd., Yanshui Dist.,
Tainan City 737, Taiwan

Departs from Jiali (佳里), going
all the way to north and passing
Syuejia (學甲), Yanshuei (鹽水) and
finally arriving at Sinying (新營).



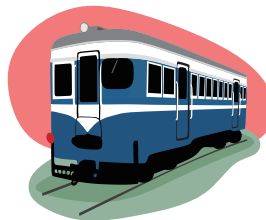
**Yeh Wang Koji Pottery
Museum**
葉王交趾陶文化館

Take the Main Green Line,
get off at the stop "Syuejia"
(學甲站)
No. 170, Jisheng Rd, Xuejia
Dist., Tainan City 726,
Taiwan



**Yanshuei Holy Spirit
Catholic Church**
鹽水天主堂

Take the Main Brown
Line, get off at the stop
"Yanshuei" (鹽水站).
No. 19, Ximen Rd., Yanshui
Dist., Tainan City 737,
Taiwan



Annei Sugar Factory
岸內糖廠

Take the Brown2, get off at the stop
"Annei" (岸內站), walk 10 minutes until
you get behind the Annei Elementary
School (岸內國小).



Suggested Itinerary:

10:05 - take the Main Brown Line at
"Sinying" (新營站)

10:23 - get off at the stop "Yanshuei"
(鹽水站) (stay for 3 hours), walk to
the Octagon Wooden House (八角
樓), then the church (天主堂), then
Ciaonan Old Street (橋南老街) and
finish at the restaurant Yanshuei
Gourmet (鹽水美食).

13:23 - take the Main Brown Line at
the stop "Yanshuei" (鹽水站).

13:50 - get off at the stop "Syuejia" (學
甲站) (stay for 1.5 hours), visit the "Ciji
Temple and the Yeh Wang Koji Pottery
Museum" (慈濟宮暨葉王交趾陶文化
館).

17:20 - return trip to "Syuejia" (學甲)
Runs from 6:05 till 20:05, departs from
both Sinying (新營) and Jiali (佳里),
every 30 minutes or 1 hour.



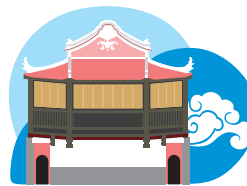
**The Quanlihao
Blacksmith Shop**
泉利號打鐵鋪

Take the Main Brown Line,
get off at the stop "Ciaonan
Vil." (橋南里) or "Yanshuei"
(鹽水站). No. 8, Qiaonan
Street, Yanshui Dist., Tainan
City 737, Taiwan



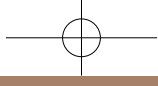
**The Old Tanghu Art
Villa**
老塘湖藝術村

Take the Brown 10, get off
at the stop "Jhongcaodi"
(中草站)
No. 49-26, Meifeng,
Xuejia Dist., Tainan City
726, Taiwan



**The Yanshui Octagon Wooden
House**
八角樓

Take the Main Brown Line, get off at
the stop "Yanshuei" (鹽水站)
No. 1, Lane 4, Zhongshan Rd.,
Yanshui Dist., Tainan City 737,
Taiwan



Don't miss out



Traditional Snacks at Yanshuei



How to get there

Take the Main Brown Line, get off at the stop Yanshuei (鹽水站), walking distance to each shop.

Spotlight

Ahji Noodle 阿姬意麵

台南市鹽水區中山路2-8號
No. 2-8, Zhongshan Road, Yanshui Dist., Tainan City 737, Taiwan
+886-6-6525078

Charcoal Toasted Egg-Roll 炭火雞蛋糕

台南市鹽水區中正路52號
No. 52, Zhongzheng Road, Yanshui Dist., Tainan City 737, Taiwan

Yingfeng Shaved Ice Shop 銀鋒冰果室

台南市鹽水區中山路1號
No. 1, Zhongshan Road, Yanshui Dist., Tainan City 737, Taiwan
+886-6-6522202



Nostalgic Taste at Singying



How to get there

Take the Main Brown Line, get off at the stop Minjhih Civic Center (民治市政中心), walk 2 minutes to visit.



Spotlight

Hua Wei Hsiang Fresh Duck Broth 華味香 鴨料理

台南市新營區長榮路1020號
No. 1020, Sec. 2, Changrong Road (JTT Plaza), Xingying Dist., Tainan City 726, Taiwan
+886-6-6569292



Ahzhong Bean Sprout Noodle 阿忠豆菜麵

台南市新營區中正路25號
No. 25, Zhongzheng Road, Xingying Dist., Tainan City 726, Taiwan
+886-6-6379688





Yeh wang Koji Pottery Museum at Syuejia

How to get there

Take the Main Brown Line, get off at the stop “Syuejia” (學甲站), walk about 6 minutes to get Syuejia Ciji Temple (學甲慈濟宮)

Spotlight

Ciji Temple
學甲慈濟宮

台南市學甲區濟生路 170 號

No. 170, Jisheng Road, Xuejia Dist., Tainan City 726, Taiwan
+886-6-7836110

Yeh wang Koji Pottery Museum, next to Ciji Temple

葉王交趾陶文化館，慈濟宮旁

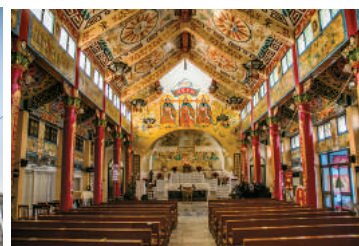
Opening Hours: Tue~Sun
08:30~12:00, 14:00~17:00



Yuejin Port at Yanshuei

How to get there

Take the Main Brown Line, get off at the stop “Yanshuei” (鹽水站), walk 5 minutes along the Kangle road (康樂路).



GreenLine 1 Main Line + 23 Routes



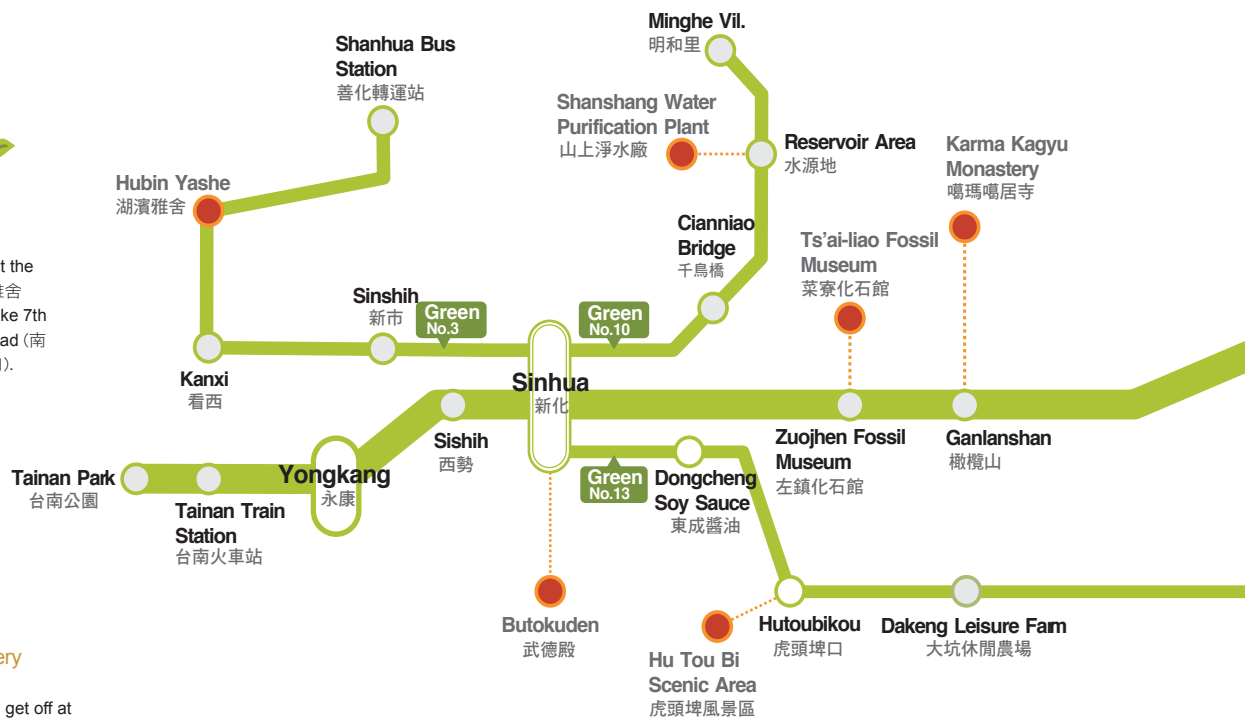
Hubin Yashe 湖濱雅舍

Take the Green 3; get off at the stop "Hubin Yashe" (湖濱雅舍站), the intersection of Nanke 7th Road and Shanbaozhu Road (南科七路與三抱竹路交叉路口).



Karma Kagyu Monastery 噶瑪噶居寺

Take the Main Green Line, get off at the stop "Ganlanshan" (橄欖山站)
No. 91-2, Zuozhengli, Zuozheng Dist., Tainan City 713, Taiwan



Shanshang Water Purification Plant 山上淨水場

Take the Green 10; get off at the stop "Reservoir Area" (水源地站).
No. 16, Shanshangli, Shanshang Dist., Tainan City 714, Taiwan



Zengwan Reservoir 曾文水庫

Take the Green 24, get off at the stop "Viewing floor" (觀景樓站) or "Zengwan" (曾文之眼站).



The Mud volcanic Geological Badland – The Moon World 草山月世界

Take the Green 13, get off at the stop "Ganglin" (岡林), and walk about 40 minutes.

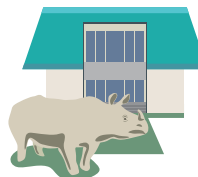


Meiling 梅嶺

Take the Green 22; get off at the stop "Meiling" (梅嶺站), starts walking down the trail.

Butokuden 新化武德殿

Take the Main Green Line, get off at the stop "Xinhua" (新化站)
No. 53, Heping Street, Xinhua Dist., Tainan City 712, Taiwan



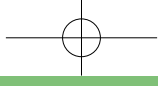
Ts'ai-liao Fossil Museum 台南市菜寮化石館

Take the Main Green Line, get off at the stop "Zuojhen Fossil Museum" (左鎮化石館站)
No. 61-1, Rongheli, Zuozheng Dist., Tainan City 713, Taiwan



Hutoubi Scenic Area 虎頭埤風景區

Take the Green 13, get off at the stop "Hutoubikou" (虎頭埤口站)
No. 42, Lane 36, Zhongxing Road, Xinhua Dist., Tainan City 712, Taiwan



Depart from Tainan Train Station (台南火車站) and travel via Yongkang (永康), Sinhua (新化), Shanshang (山上), Zuojhen (左鎮), Yujing (玉井).



Suggested Itinerary:

10:00 - take the Main Green Line at "Tainan Train Station" (台南火車站).

10:40 - get off at the stop "Sinhua" (新化站), do the sightseeing for 2.5 hours. Visit the Sinhua Old Street, enjoy finger flickering food, visit Sinhua "Butokuden" (武德殿), look around the Sinhua Fruit and Vegetable Market.

13:25 - take the Main Green Line at the stop "Sinhua" (新化站).

13:40 - get off at the stop "Zuojhen Fossil Museum" (左鎮化石館站), (stay one hour).

14:40 - take the Main Green Line at the "Zuojhen Fossil Museum" (左鎮化石館).

14:55 - get off at the stop "Yujing" (玉井站), (stay for 1.5 hours). Yujing Fruit Market, look around and do some shopping, try the mangoes with shaved ice.

16:30 - return trip from Yujing.



Cianghuangkeng

羌黃坑

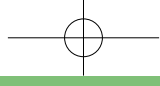
Take the Main Green Line to the stop "Yujing" (玉井站), transfer to the Green 27, get off at the stop "Cianghuangkeng" (羌黃坑站).



The Historical House of the Jiang Family

江家古厝

Take the Green 20, 22, 23, 24 or 25, get off at the stop "Lutaoyang" (鹿陶洋站), No. 86, Yüche, Lutien Village, Nanxi Dist., Tainan City 715, Taiwan



Don't miss out



Traditional Snacks at Sinhua



How to get there

Take the main Green Line, get off at stop **Sinhua** (新化站), walking 3 minutes along the old street.

Spotlight

Sweet Potato Garden 瓜瓜園

台南市新化區中正路127巷31號
No. 31, Lane 127, Zhongzheng Road,
Xinhua Dist., Tainan City 712, Taiwan
+886-6-5902803



Singhua Ribs Noodle 新化排骨麵

台南市新化區正新路238-1號
No. 238-1, Zhengxing Road, Xinhua
Dist., Tainan City 712, Taiwan +886-
6-6905711



Lienxin Fresh Fish Soup 蓮心鮮魚湯

台南市新化區中正路367號
No. 367, Zhongzheng Road, Xinhua
Dist., Tainan City 712, Taiwan



Tainan Resource Waterway at Shanshang



How to get there

Take the Main Green Line to the stop **Sinhua** (新化站), transfer to Green 10, get off at the stop **Reservoir Area**(水源地站), walk 10 minutes.



Spotlight

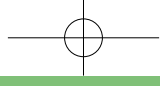
Tainan Resource Waterway (advanced booking required) 台南水道水源區

台南市山上區山上里16號
No.16, Shanshang Li, Shanshang Dist.,
Tainan City 743, Taiwan+886-6-6569292



Water Purification Area 淨水地區

Open Hour:08:30~17:30 (Mon~Tue
Closed)
+886-6-5782811



Old Street at Singhua



Eggs Cake & Jelly Fig Ice
雞蛋糕、八寶愛玉冰

台南市新化區信義路213號

No. 213, Xinyi Road, Xinghua Dist.,
Tainan City 712, Taiwan
+886-6-5905031



How to get there

Take the Main Green Line, get off at the stop Singhua (新化站), turn left to the intersection of Zhongshan and Zhongzheng Road, then turn left, walk to "Singhua Street Battle Field", or walk to "Butokuden" in Old Street, the opposite way.



Spotlight

Singhua Butokuden
新化武德殿

台南市新化區和平街53號

No. 53, Heping Street, Xinghua Dist., Tainan City 712,
Taiwan

+886-6-5905356



Singhua Street Battle Field
新化街役場

新化區太平里中正路500號

No. 500, Zhongzheng Road, Xinghua Dist., Tainan
City 712, Taiwan



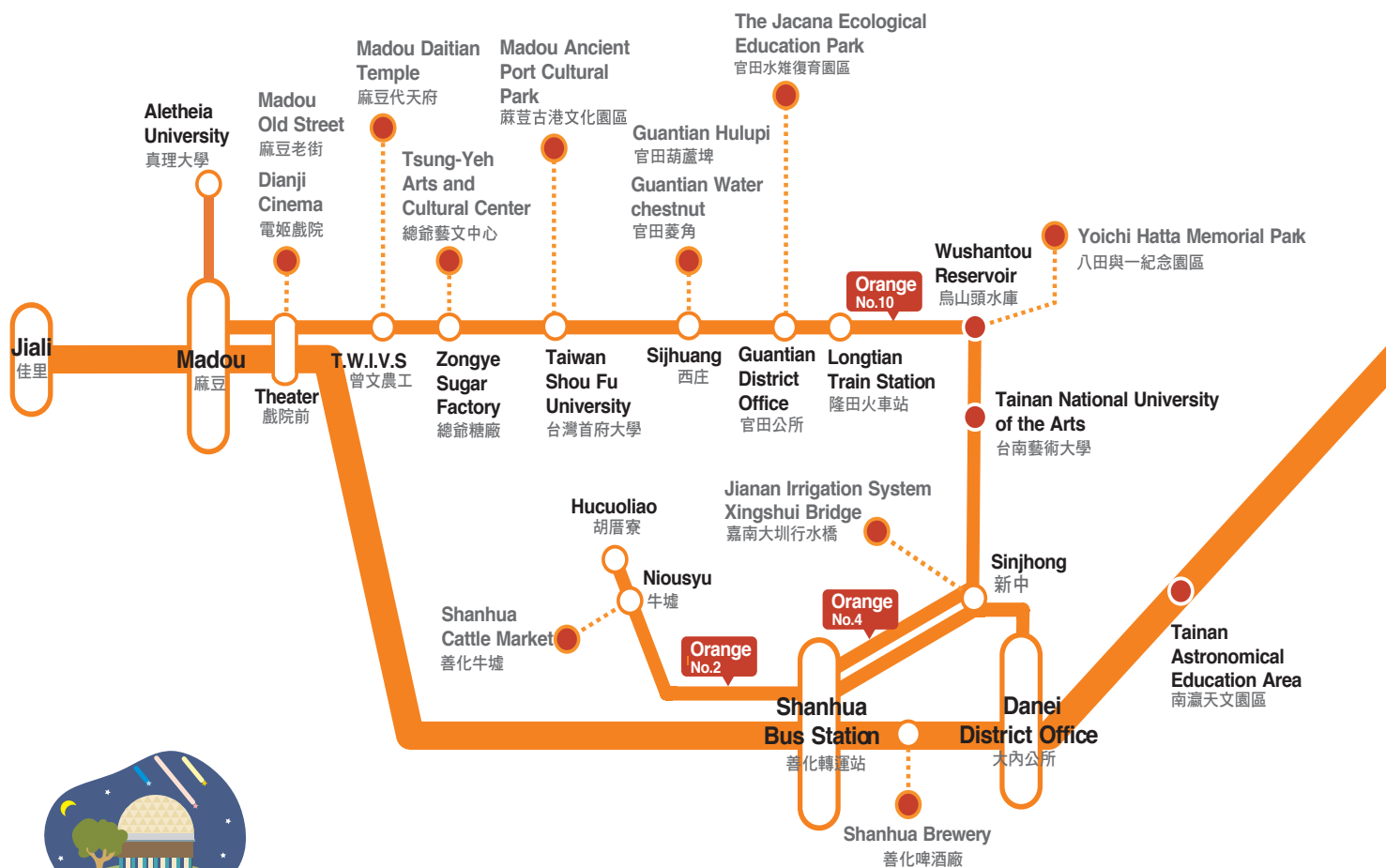
Zengwen Reservoir at Rende

How to get there

Take the Green 24, get off at the stop "Viewing Floor" (觀景樓站) or "Zengwen" (曾文之眼站), the Place where Tainan and Jiayi Counties Meet.



OrangeLine 1 Main Line + 9 Routes



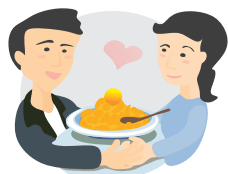
Tainan Science Education Museum
南瀛天文教育園區

Take the Main Orange Line, get off at the stop "Tainan Astronomical Education Area" (南瀛天文教育園區站), No. 34-2, Quxili, Danei Dist., Tainan City 742, Taiwan



The Jacana Ecological Education Park
水雉生態教育園區

Take the Orange 10, get off at the stop "Guantian District Office" (官田公所站), and walk about 10 minutes.



Yujing Mango
玉井芒果

Take the Main Orange or Green Line, get off at the stop "Yujing" (玉井站).



Madou Ancient Port Cultural Park
麻荳古港文化園區

Take the Orange 10, get off at the stop "Taiwan Shoufu University" (台灣首府大學站), No. 87-30, Nanshi, Nanshili, Tainan City 721, Taiwan



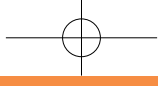
Tsou Ma Lai Farm
走馬瀨農場

Take the Main Orange Line, get off at the stop "Zoumalai" (走馬瀨站). No. 60, Qiziwa, Erxili, Danei Dist., Tainan City 742, Taiwan



The Dianji Cinema
電姬戲院

Take the Main Orange Line, get off at the stop "Theater" (戲院前站).



Depart from Jiali(佳里), thorough Madou(麻豆), Danei(大內) to Yujing(玉井).



Suggested Itinerary:

10:40 – take the Main Orange Line at “Shanhua Train Station” (善化火車站).

10:45 - get off at the stop “Shanhua” (善化站), stay for 2 hours. Visit the Qingangong Temple (慶安宮), then the Old Gourmet Snacks Street (老街美食小吃), then the Old Street House (老街屋).

12:45 – transfer to the Main Orange Line at the stop “Shanhua” (善化站).

12:50 - get off at the stop “Siwei” (溪尾站),

Zoumalia
走馬瀨

Tsou-Ma-Lai Farm
走馬瀨農場



Shanhua Cattle Market 善化牛墟

Take the Main Orange Line, get off at the stop “Shanhua Elementary School” (善化國小站) or “South Siwei” (南溪尾站), walk about 15 minutes or take the Orange 2, get off at the stop “Niousyu” (牛墟站).



The Yoichi Hatta Memorial Park 八田與一紀念園區

Take the Orange 4 or Orange 10; get off at the stop “Wushantou Reservoir” (烏山頭水庫站).
No. 68-2, Jiananli, Guantien Dist.,
Tainan City 720, Taiwan



Guantien Hulupi 官田葫蘆埤

Take the Orange 10, get off at the stop “Longben Vil.” (隆本里站), walk for about 15 minutes; or get off at the stop “Sijhuang” (西庄站), walk in the direction of 176 County Road for about 20 minutes.



Madou Daitian Temple 麻豆代天府

Take the Orange 10, get off at the stop “T.W.I.V.S” (曾文農工站), or take the Main Yellow Line, get off at the stop “Wuwang Temple” (五王廟前站).



stay for two hours.

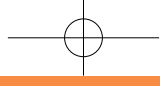
Visit the Ximei Creek Forest Park (溪美森林公園), then the Shan Tang Elementary School (善糖國小), finally the Shanhua Sugar Factory (善化糖廠).

14:50 - take the Main Orange Line at the stop “Siwei” (溪尾站).

15:00 - get off at the stop “Theater” (戲院前站), stay for 2 hours.

Visit the Madou Old Street (麻豆老街), then the Dienji Cinema (電姬戲院), finally the Century Ice Shop (百年冰店).

17:10 - returning trip, depart from Madou.



Don't miss out



Traditional Snacks at Madou



How to get there

Take the Main Orange Line, get off at the stop "Madou Precinct" (麻豆分局站), or take the Main Yellow Line, get off at the stop "Yishangcian" (一商前), and walk 3 minutes.



Wushantou Reservoir at Guantian



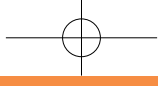
How to get there

Take the Orange 4 or Orange 10, get off at the stop "Wushantou Reservoir" (烏山頭水庫站).

Spotlight

Wushantou Reservoir
烏山頭水庫
台南市官田區嘉南里68-2號
No. 68-2, Jianan Li, Guantian Dist.,
Tainan City 720, Taiwan





Spotlight

Fried Spanish Mackerel
Thick Soup
土托魚羹

台南市麻豆區中正路72號
No. 72, Zhongzheng Rd., Madou Dist.,
Tainan City 721, Taiwan

Longquan
Shaved Ice & Rice Ball
龍泉冰店

台南市麻豆區平等路2-4號
No. 2-4, Pindeng Rd., Madou Dist.,
Tainan City 721, Taiwan
+886-6-5721796

Shanhua Brewery
善化啤酒廠

台南市善化區成功路2號
No. 2, Chengong Rd., Shanhua Dist.,
Tainan City 741, Taiwan
+886-6-5852377

Zhu Bowl Rice Cake
助碗糕

台南市麻豆區中正路29號
No. 29, Zhongzheng Rd., Madou Dist.,
Tainan City 721, Taiwan
+886-6-5720883



Old Theater at Madou



How to get there

Take the Main Orange or Yellow Line,
get off at the stop "Theater" (戲院前站).

Spotlight

Dianji Cinema
電姬戲院

台南市麻豆區中山路112號
No. 112, Zhongshan Rd., Madou Dist., Tainan
City 721, Taiwan



Chen Pomelo Garden
陳老師文旦園

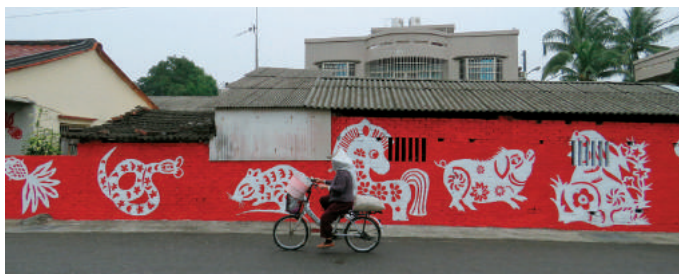
台南市麻豆區大埤埕祖廟1-6號
No. 1-6, Wangzu Temple, Dacheng Li, Madou
Dist., Tainan City 721, Taiwan
886-6-5721771



Painted Village at Shanhua

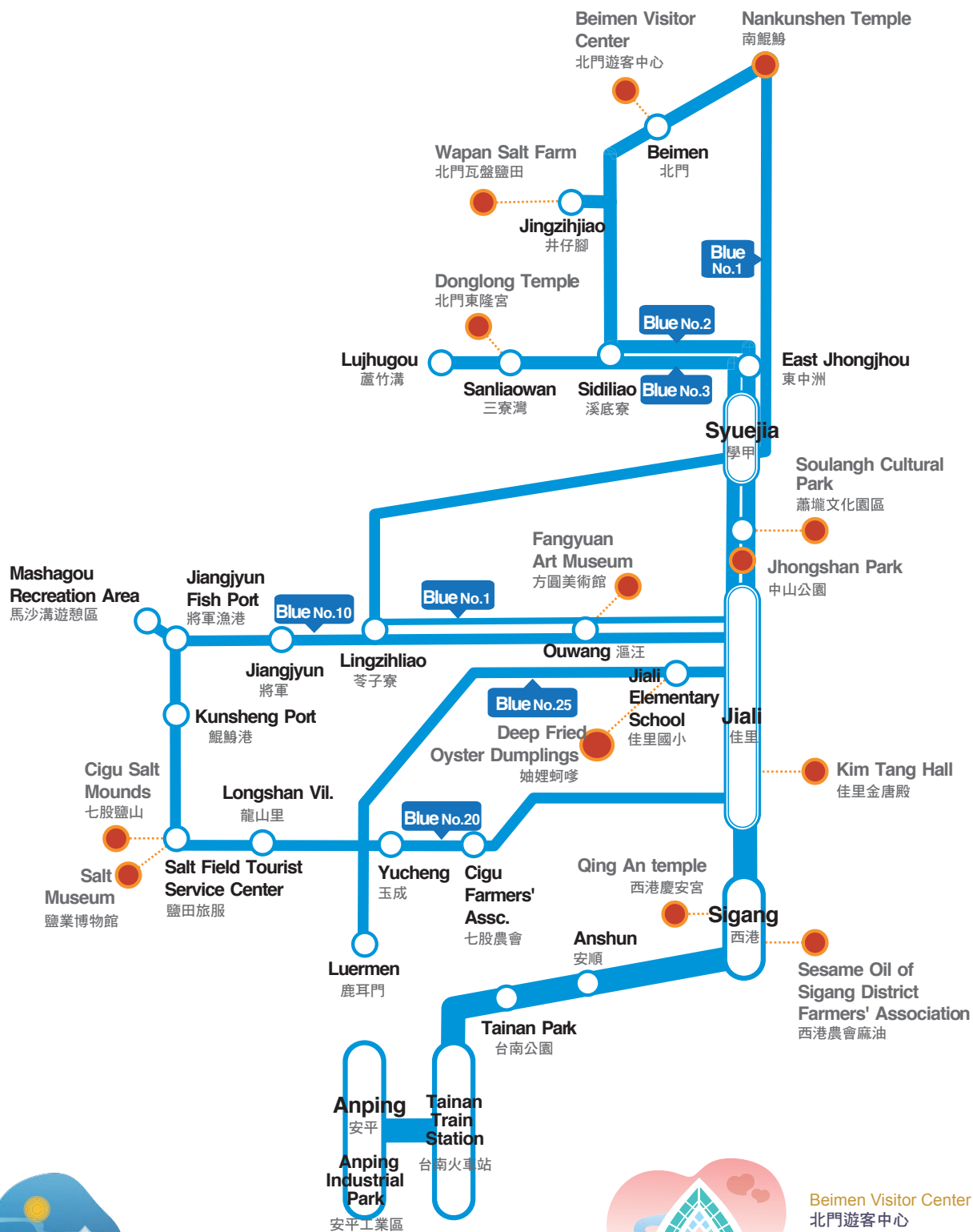
How to get there

Take the Orange 2, get off at the stop
"Yangming Elementary School" (陽
明國小站), and walk for about 10
minutes, the Shanhua Cattle Market is
just two stops further away, you can visit both of them on the same trip



BlueLine

1 Main Line + 13 Routes



Cigu Salt Mounds
七股鹽山
Take the Blue 20, get off at stop "Salt Field tourist service center" (鹽田旅服站).
No. 69, Yenchengli, Qigu Dist., Tainan City 724, Taiwan



Beimen Visitor Center
北門遊客中心
Take the Blue 2, get off at the stop "Beimen" (北門站).
No. 200, Jiucheng, Beimenli, Beimen Dist., Tainan City 727, Taiwan



Fangyuan Art Museum 方圓美術館

Take the Blue 1, get off at stop
"Ouwang" (漚汪站), walk about 5
minutes.

No. 1, Xihuali, Jiangjun Dist.,
Tainan City 725, Taiwan



Donglong Temple's Burning the Paper Ship 東隆宮燒王船

Take the Blue 3, get off at stop
"Sanliaowan" (三寮灣站)



Sesame Oil of Sigang District Farmers' Association 西港農會麻油

Take the Main Blue Line, get off at stop
"Sigang" (西港站).
No. 2, Wenhua Road, Xigang Dist., Tainan
City 723, Taiwan



Jiali Zhongshan Park 佳里中山公園

Take the Blue 2 or Blue 3, get off at the
stop "Zhongshan Park" (中山公園站)



Jiali Deep Fried Oyster Dumplings 佳里蚵蜷蚵嗲

Take the Main Blue Line, get off
at the stop Jiali (佳里站), next to
the First Bank is the "Zhouli Fried
Oyster Dumpling (蚵蜷蚵嗲)"



Jiali Jintang Temple 佳里金唐殿

Take the Main Blue Line, get off
at the stop "Jiali (佳里站)", and
walk along the Wenhua Road,
left turn to Zhongshan Road.
No. 289, Jiali Dist., Tainan City
722, Taiwan



Jingzihjiao Wapan Salt Farm 井仔腳瓦盤鹽田

Take the Blue 2, get off at the
stop "Jingzihjiao" (井仔腳站).



Soulangh Cultural Park 蕭壠文化園區

Take the Blue 2 or Blue 3, get off
at stop "Soulangh Cultural Park"
No. 130, Liuanli, Jiali Dist., Tainan
City 722, Taiwan



Suggested Itinerary

10:05 take the Main Blue Line at
Tainan Train Station (North Station 台
南火車站).

11:00 get off at Jiali (佳里站) for staying
2 hours; Observe the Jiannian Arts (金
唐殿賞剪黏藝術) at Jintang Temple >
Zhongshan Gourmet Snacks Market
(中山市場美食小吃) > Watch Old
House along the Zhongshan Road (中
山路上老街屋).

13:40 transfer the Blue 10 at the stop
"Jiali" (佳里站).

13:50 get off at the stop of Ouwang
(漚汪站) for staying 2 hours;
Wenhengdian, Story land of
Ouwang (文衡殿, 漚汪人故事館) > visit
FANG-YUAN Art Museum (方圓美術
館) > Shiang Yu Museum (香雨書院).

16:11 Return Trip from Ouwang (漚汪).



Don't miss out



Salt Cultural Zone in Beimen

How to get there

Take the Line Blue 2, get off at the stop Beimen Tai An Temple (北門泰安宮), you will find "Yanhxiang B&B", rent a bike, seeing around, you will find the hometown of salt.

Spotlight

Beimen Visitor Center 北門遊客中心

台南市北門區北門里200號

09:00~17:30 Daily open, except New Years' Eve.

No. 200, Beimen Li, Beimen Dist., Tainan City 727, Taiwan
+886-6-7861017

Jingzihjiao (井仔腳) is the hometown of milkfish – here milkfish is fried and processed, all the hard effort is paid off when you taste it with rice, a perfect match even for the most picky with food.





Traditional Snacks at Jiali



How to get there

Take the Main Blue Line, get off at the stop Jiali (佳里站), next to the First Bank is the "Zhouli Fried Oyster Dumpling" (蚵蚵羹), open after 12 AM until sold out.



Sesame Oil from Sigang



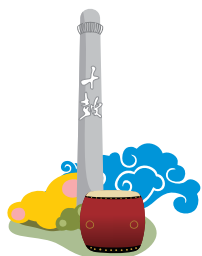
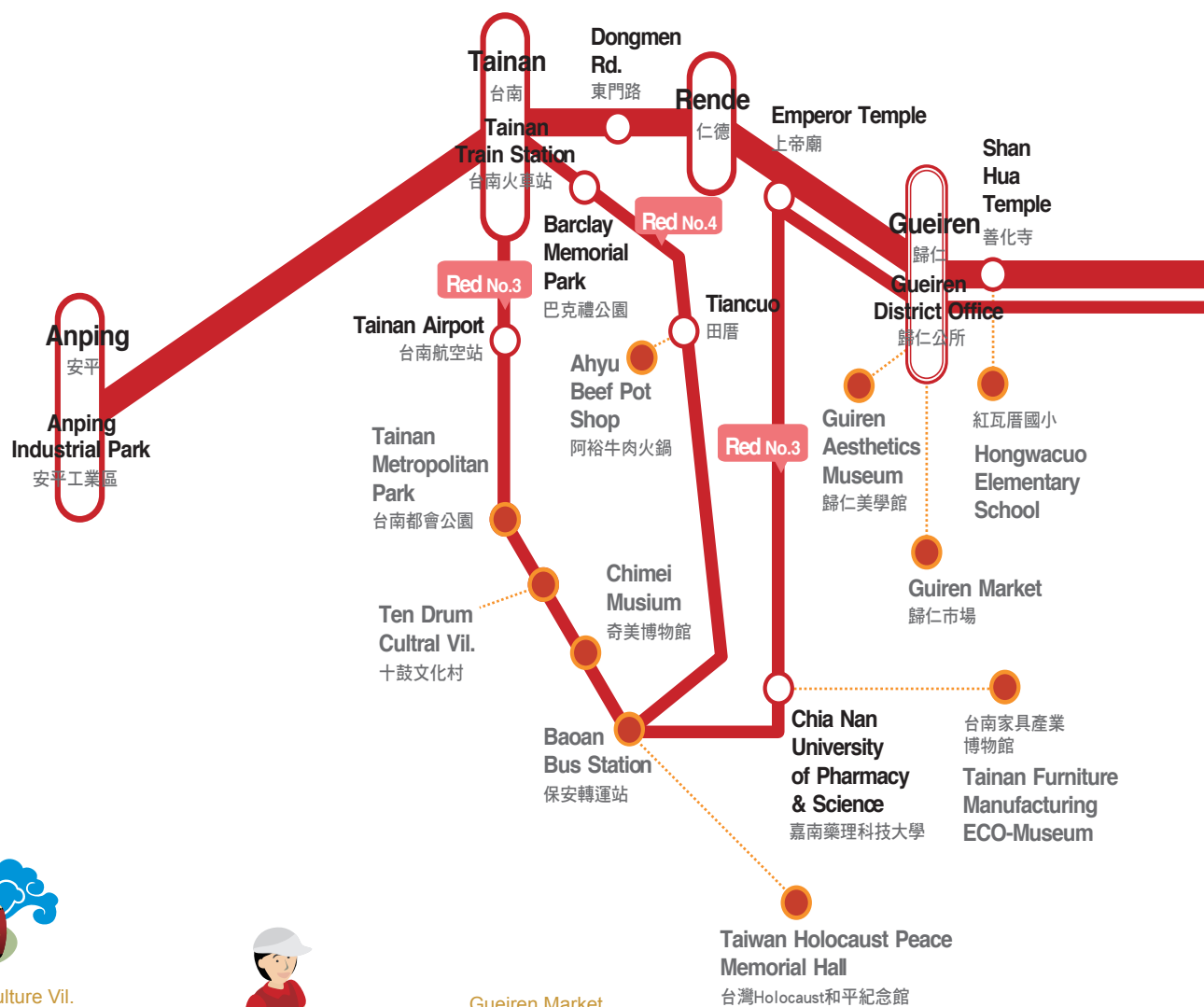
How to get there

Sigang District Farmers Association
西港區農會

Take the Main Blue Line, get off at stop "Sigang西港站", walk a few steps, turn right, is the Sigang District Farmers Association (西港區農會).



RedLine 1 Main Line + 9 Routes



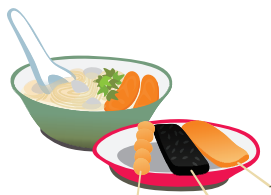
Ten Drum Culture Vil.
十鼓文化園區

Take the Red 3, get off at stop "Ten Drum Cultral Vil." (十鼓文化村站).
No. 326, Sec. 2, Wenhua Rd., Rende Dist., Tainan City 717, Taiwan



Gueiren Market
歸仁市場

Take the Main Red Line, get off at stop "Gueiren District Office" (歸仁公所站).
No. 9, Pingnan Street, Guiren Dist., Tainan City 711, Taiwan



Guanmiao Shanxi Temple
關廟山西宮

Take the Main Red Line, get off at stop "Guanmiao"
No. 37, Zhenyi Street, Guanmiao Dist., Tainan City 718, Taiwan



Chime Museum
奇美博物館

Take the Red 3, get off at the stop "Tainan Metropolitan Park" (台南都會公園站).
No. 66, Sec. 2, Wenhua Rd., Rende Dist., Tainan City 717, Taiwan



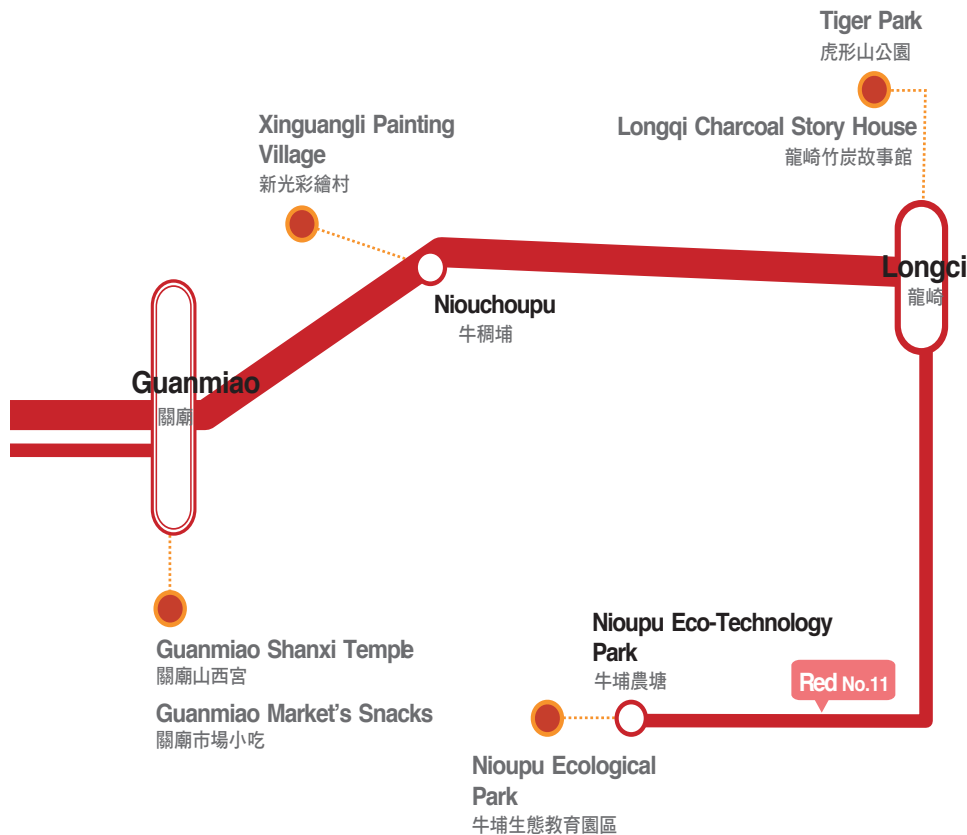
Ahyu Beef Pot
阿裕牛肉火鍋

Take the Red 4, get off at stop "Tiancuo" (田厝站).
No. 525, Sec. 1, Zhongzheng Rd., Rende Dist., Tainan City 717, Taiwan



Longqi Charcoal Story House
龍崎竹炭故事館

Take the Main Red Line, get off at stop "Longqi" (龍崎站).
No. 49, Xinsizi, Qidingli, Longqi Dist., Tainan City 719, Taiwan



Xinguang Painting Village 新光彩繪村

Take the Main Red Line, get off at stop "Niouchoupu" (牛稠埔站), walk about 20 min., you will see the Xinguang Vil. Guanmiao Dist., (關廟區新光里) keep walk from the left of Singuang Elementary School (新光國小).



Tainan Furniture Manufacturing ECO-Museum 台南家具產業博物館

Take the Red 3, get off at stop "Chia Nan University of Pharmacy and Science" (嘉南藥理科技大學站). No. 321, Sec. 1, Erjen Rd., Rende Dist., Tainan City 717, Taiwan



Nioupu Mudstone Soil and Water Conservation Park 牛埔生態教育園區

Take Red 11, get off at the stop "Nioupu Eco-Technology Park" (牛埔農塘站). No. Nioupu Village, Longqi Dist., Tainan City 719, Taiwan



The Taiwan Holocaust Peace Memorial Hall 台灣Holocaust和平紀念館

Take Red 3, get off at the stop "Baoan Bus Station" (保安轉運站). No. 598, Sec. 1, Wenxien Rd., Rende Dist., Tainan City 717, Taiwan

Tiger Park 虎形山公園

Longqi Charcoal Story House 龍崎竹炭故事館

Longqi 龍崎



Suggested Itinerary

8:25 take the Main Red Line at Tainan Train Station (台南火車站・北站); 9:10 get off at stop "Longqi" (龍崎站) for staying 20 minutes; Charcoal Story House (竹炭故事館).

9:34 take the Red 11 at the stop "Longqi" (龍崎站).

9:50 get off at stop "Nioupu Eco-Technology Park" (牛埔農塘站) staying for one hour; Nioupu Mudstone Soil and Water Conservation Park (牛埔泥岩水土保持教育園區)> Longqi Badland (龍崎惡地形) "Moon World"> Pavilion in the Water (水中樓台).

11:10 take the Red 11 at the stop "Nioupu Eco-Technology Park" (牛埔農塘站) to the stop "Guanmiao" (關廟站).



11:35 get off at stop "Guanmiao" (關廟站) for staying 2 hours; Guanmiao Shanxi Temple (關廟山西宮)> Guanmiao Market (關廟市場), enjoy the local foods.

13:30 take the Main Red Line at the stop "Guanmiao" (關廟站) to "Gueiren District Office" (歸仁公所站).

13:35 get off at stop "Gueiren District Office" (歸仁公所站) staying for 30 minutes; Gueiren Photo Gallery (歸仁美學館).

14:05 return from the stop "Gueiren District Office" (歸仁區公所站).

Don't miss out



Traditional Snacks from Guanmiao



How to get there

Take the Main Line Red at Main Railway Station (火車站前), or Take the Red 3 at THSR Tainan Station (高鐵台南站), get off at the stop "Guanmiao" (關廟站).

Spotlight

Yiwang Noodle Shop
乙旺魯麵

台南市關廟區關廟公有市場號
94號攤

Booth 94, Guanmiao Public
Market, Guanmiao Dist., Tainan
718, Taiwan
+886-6-5963234



Guanmiao Shanxi Temple
關廟山西宮

台南市關廟區正義街37號
No. 37, Zhengyi Street, Guanmiao
Dist., Tainan City 718, Taiwan
+886-65952135



Eco Park Interestings

How to get there

Transfer the Red 11 at the stop "Guanmiao 關廟站", get off at the stop "Niupu Eco-Technology Park 牛埔農塘站", and walk for 5 minutes to "Niupu Ecological Park 牛埔自然生態園區", only 7 bus trips a day, it is better for taking the Morning Trips, and having meals at Guanmiao.

Spotlight

牛埔生態園區

Visit the country poet Caodi, admire his calligraphy, witty language, listen to his poems being recited and then visit the Niupu Ecological Park.

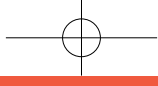


How to get there

Take the Main Red Line, Red 11, Red 12, get off at Niouchoupu(牛稠埔), Walk for 20 minutes.



Walking from the south Liao village (南寮村) to the north Liao village (北寮村) and be surprised by more than 120 colorful house paintings, exhibit everywhere along the way – all Mr. Huang Zhenfu's (黃真福) works.



Cultural Creations at Rende



How to get there

Transfer Red 3 at Tainan Train Station (台南火車站) or Baoan Transferring Station (保安轉運站), get off at stop "Ten Drum Culture Vil." (十鼓文化村站), the last bus trip at 21:20

Spotlight

Ten Drum Culture Vil.
十鼓仁糖文創園區
台南市仁德區文華路二段326號
No. 326, Sec. 2, Wenhua Rd.,
Rende Dist., Tainan City 717,
Taiwan
+886-6-2662225



Museum Adventures

How to get there

Take the Line Red 3 or Red 4, get off at the stop "Tainan Metropolitan Park" or "Chimei Museum". (都會公園 - 奇美博物館)

Spotlight

Chimei Museum
奇美博物館

台南市仁德區文華路二段66號
No. 66, Sec. 2, Wenhua Rd., Rende Dist.,
Tainan City 717, Taiwan
+886-6-2660808



DowntownLine

18 Routes + 2 THSR Shuttle Bus



Wu's Garden
吳園

Take City Bus No.2, get off at the stop "Intersection of Jhongshan Rd. and Mincyuan Rd." (中山民權路口站), The Intersection of Mincyuan Rd., and Gongyuan Rd., West Central Dist.



The Roman Catholic Diocese of Tainan Zhonghua Shengmutang
中華聖母堂

Take the City Bus No.2, get off at the stop "Jian-sing Junior High School" (建興國中站)
No. 195, Kaishan Rd., West Central Dist., Tainan City 700, Taiwan



Green Bean Sweet Soup at Qingzhong Street
慶中街綠豆湯

Take the City Bus No.2, Get off at the stop "Visitors Association" (觀光協會站)
No. 16, Qingzhong Street, West Central Dist., Tainan City 700, Taiwan



18 Mau Tea House
十八卯茶屋

Take the City Bus No.1 or Bus No.2, get off at the stop "Intersection of Jhongshan Rd. and Mincyuan Rd." (中山民權路口站).
No. 30, Sec. 2, Mingquan Rd., West Central Dist., Tainan City 700, Taiwan



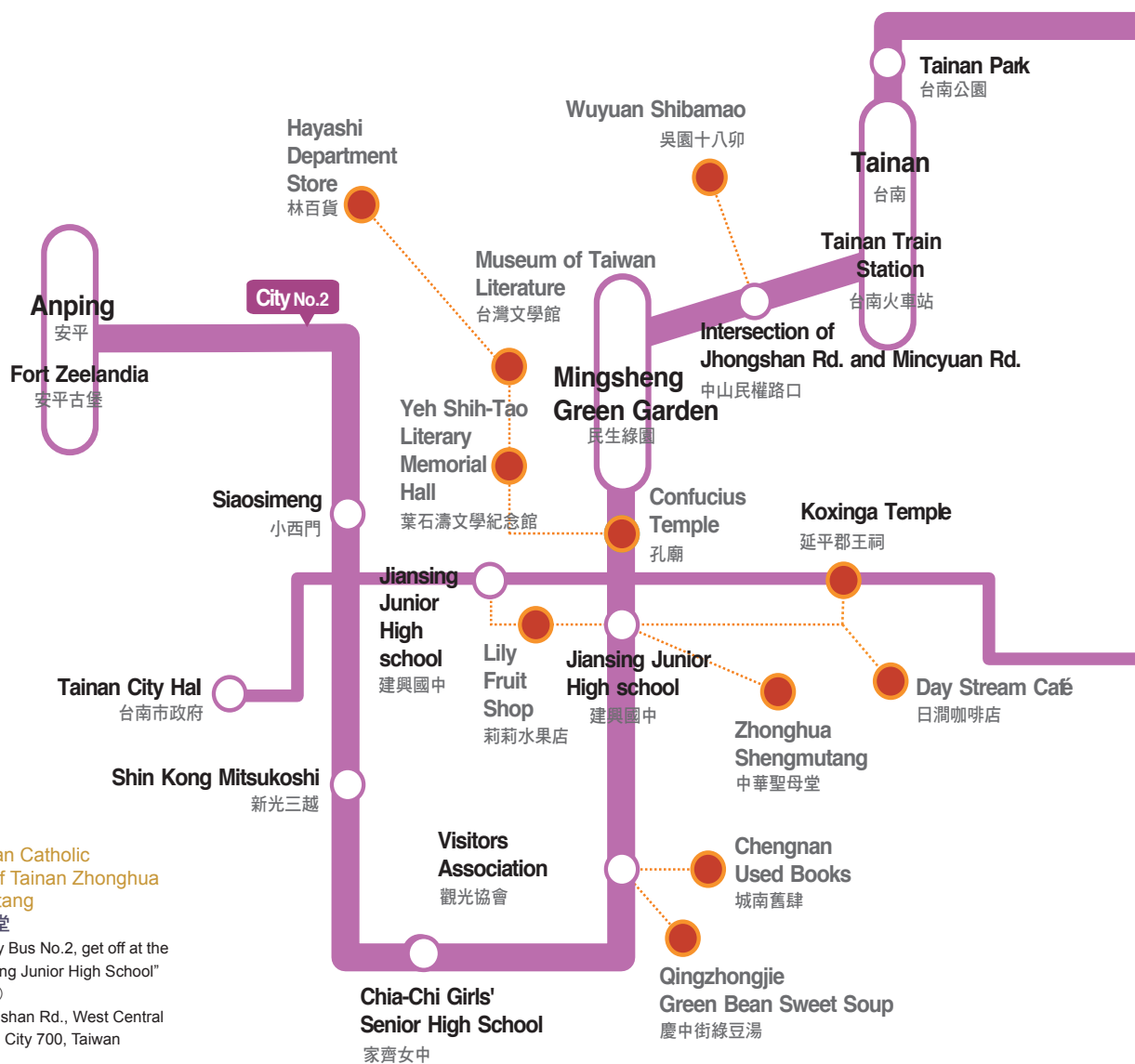
Fort Zeelandia
安平古堡

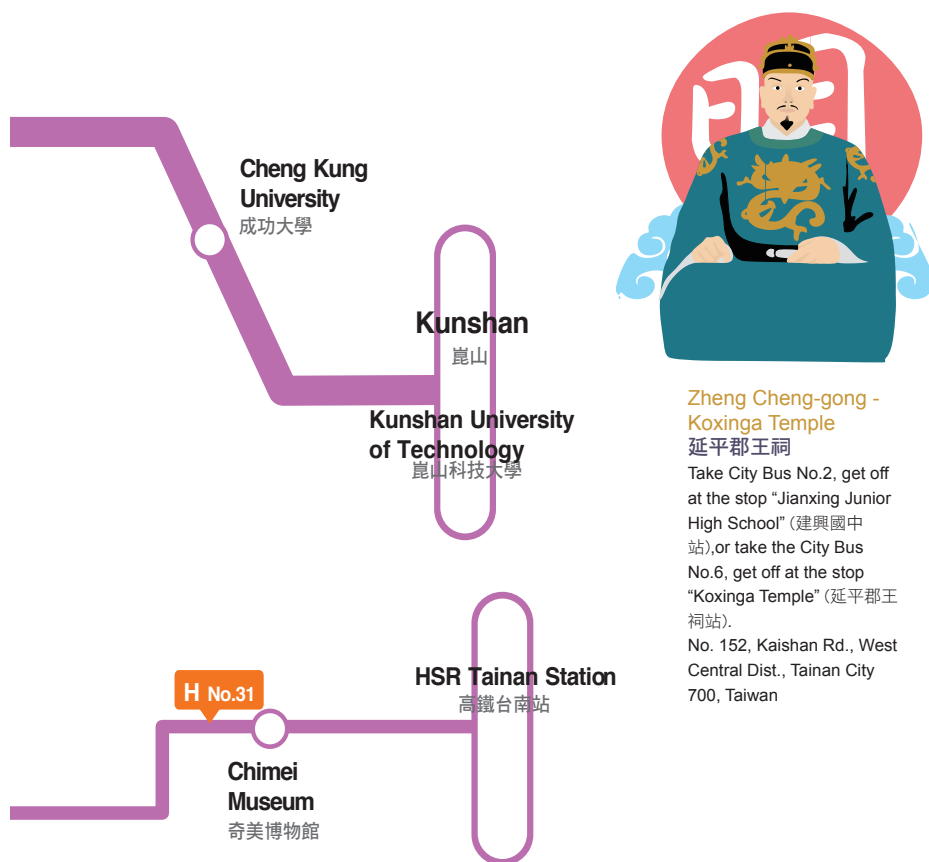
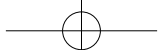
Take the City Bus No.2, get off at the stop "Fort Zeelandia" (安平古堡站).
No. 82, Guosheng Rd., Anping Dist., Tainan City 708, Taiwan



Tainan Confucius Temple
台南孔廟

Take the City Bus No.2, get off at the stop "Confucius Temple" (孔廟站)
No. 2, Nanmeng Rd., West Central Dist. Tainan City 700, Taiwan





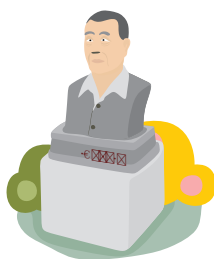
Hayashi Department Store 林百貨

Take the City Bus No. 1, get off at stop "Hayashi Department Store (Zhongheng Rd.)" 林百貨(中正路)站.
No. 63, Sec. 2, Zhongyi Rd., West Central Dist., Tainan City 700, Taiwan



Lily Fruit Shop 莉莉水果店

Take the City Bus No. 2, get off at the stop "Jian-sing Junior High School" (建興國中站).
No. 199, Sec. 1, Fuchien Rd., West Central Dist., Tainan City 700, Taiwan



Yeh Shyr-Tau Literary Memorial Museum 葉石濤文學紀念館

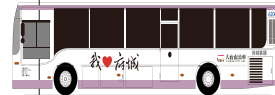
Take the City Bus No. 2, get off at the stop "Confucius Temple" (孔廟站)
No. 8-3, Youai Street, West Central Dist., Tainan City 700, Taiwan



Zheng Cheng-gong - Koxinga Temple 延平郡王祠

Take City Bus No. 2, get off at the stop "Jianxing Junior High School" (建興國中站), or take the City Bus No. 6, get off at the stop "Koxinga Temple" (延平郡王祠站).
No. 152, Kaishan Rd., West Central Dist., Tainan City 700, Taiwan

Tainan is the earliest established city, the city buses are designed with purple frame line in white bottom, the side writing with "I love the Tainan City", patrolling around downtown monuments and suburbs scenic spots.



Depart from Tainan North Train Station (台南火車站), you can take the City Bus:

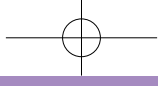
- 2 to An-ping (安平)
- 3 to Hai-dong Elementary School (海東國小)
- 5 to Tainan Airport (台南航空站)
- 6 to Sia-Kun-Shen (下鯤鯓)
- 11 to Dacheng Rd. & Simen Rd. Intersection (大成路口)
- 18 to Tainan Bus Station (台南站)
- 19 to The Indigenous Culture Museum (原住民文化會館)
- 0L to Flower Night Market (花園夜市), Tainan Living Art Center (生活美學館), Hakka Cultural Clubhouse (客家文化會館), Dadong Night Market (大東夜市) you can take the following buses line.

Depart from the stop "Tainan Train Station" (台南火車站):

- 1 to Cie-Ding Station (茄苳)
- 2 to Kun Shan University of Technology (崑山科大)
- 3 to Jhu-Gao-Cuo (竹篙厝)
- 5 to Yan-Hang (鹽行)
- 6 to Yu-Sheng-Village (裕聖里)
- 7 to the University of Kang Ning (康寧大學)
- 9 to Gong-Cin-Li (公親里)
- 10 to Lu-Er-Men Tian-Hou Temple (鹿耳門天后宮)
- 11 to Chengsi Village (城西里)
- 14 to Eternal Golden Castle (億載金城)
- 18 to Wunnan Village (塭南里)
- 19 to Dawang Senior High School (大灣高中)
- 21 to Service Center of Yonkang Industrial Park (永康工業區服務中心)
- 0R to Dadong Night Market (大東夜市), Hakka Cultural Clubhouse & Tainan Living Art Center (客家文化會館生活美學館), Flower Night Market (花園夜市)

THSR Shuttle Bus (高鐵接駁車):

- H31 HSR Tainan Station to Tainan City Hall (高鐵台南站 -- 台南市政府)
- H62 HSR Tainan Station to Chi Mei Medical Center (高鐵台南站 -- 奇美醫院)



Don't miss out



Old Temples Journey

How to get there

孔廟 Tainan Confucian temple

Take the City Bus No. 2, get off at the stop "Confucius Temple, National Museum of Taiwan Literature (孔廟 / 台灣文學館站)", and walk about 5 minutes.

風神廟 Aeolus God Temple

Take the City Bus 0 Left or 0 Right, get off at the stop "Sie-Jin Elementary School" (協進國小站), walk along the Kangle Street to find the "Aeolus God Temple".



Spotlight

Tainan Confucius temple
孔廟

台南市中西區南門路2號

No.2, Nanmen Rd., West Central Dist.,
Tainan City 700, Taiwan
+886-6-2289013



Aeolus God Temple
風神廟

台南市中西區民權路三段143巷8號

No. 8, Lane 143, Sec. 3, Mingquan Rd.,
West Central Dist., Tainan City 700,
Taiwan +886-6-2277540



Shopping in the Era Of 1960s



How to get there

Take the City Bus No.1 or Main Line Red, get off at the stop "Hayashi Department Store" (林百貨站).

Spotlight

Hayashi Department Store
林百貨

台南市中西區忠義路二段63號
No.63, Sec. 2, Zhongyi Rd., West Central Dist., Tainan City 700, Taiwan



Tasting the old Tainan snacks

How to get there

Take the City Bus No.5 to Fort Provintia (赤崁樓), Bus No.6 will bring you to Baoan Temple (保安宮), take a walk, you will find "amazing".



Spotlight

Kintoku spring rolls
金得春捲

台南市民族路三段19號
No.19, Sec. 3, Minzu Rd., West Central Dist., Tainan City 700, Taiwan
+886-6-2285397

Xiaoxijiao Bowled Rice Cake
小西腳碗粿

台南市南區夏林路1-29號
No. 1-29, Xialin Rd., South Dist., Tainan City 702, Taiwan
+886-2245000

Guo Green Been Sweet Soup at Qingzhong Street
慶中街郭綠豆湯

台南市中西區慶中街16號
No. 16, Qingzhong Street, West Central Dist., Tainan City 700, Taiwan
+886-6-2137868



Liendetang
Cake Shop
連得堂餅舖

台南市北區崇安街54號
No. 54, Chongan Street, North Dist., Tainan City 704, Taiwan
+886-6-2258429



Meet the 2nd Hand Bookstore

How to get there

Take the City Bus 2, get off at the stop "Tourist Association" (觀光協會站), and walk through the Wufei Street turn and get to No. 68, Qingzhong Street, the Chengnan Used Books (城南舊肆).



Spotlight

Chengnan Used Books
城南舊肆

台南市中西區慶中街68號
No. 68, Qingzhong Street, West Central Dist., Tainan City 700, Taiwan
+886-6-2135567

